

£95 Per Calendar Month

Laindon Road, Manchester M14 5DP

Semi-Detached House | 5 Bedrooms | 1 Bathroom



Step Inside

Key Features

- £95 per person per week
- 5 Spacious Double Bedrooms
- Bills package can be included
- Virtual tour available
- Accessibility to Bus Routes & Eateries Along With Shops, Convenience Stores

Property Description

2022-2023 Spacious Five bedroom classical victorian now available to rent £95 per person week Bills can be included for an additional £17.64

Main Particulars

Available for ~~UPCOMING YEAR~~

Colossal property with 5 spacious bedrooms, and 2 bathrooms brilliantly situated in the heart of Victoria Park. The property consists of five spacious bedrooms with classical fitting throughout. The location guarantees ease of access to the majority of the bus routes and easy commuting.

The high volume of eateries, takeaways, restaurants, bars and pubs in the immediate surroundings and vicinity flaunts a wide range of hotspots and local favorites.

Additional Information

Bus stop nearby the property

Buses every 3 to 5 minutes.

41, 42, 43, 44, 50, 130, 141, 142, X41, X57

15 Minutes to Manchester University by Bus

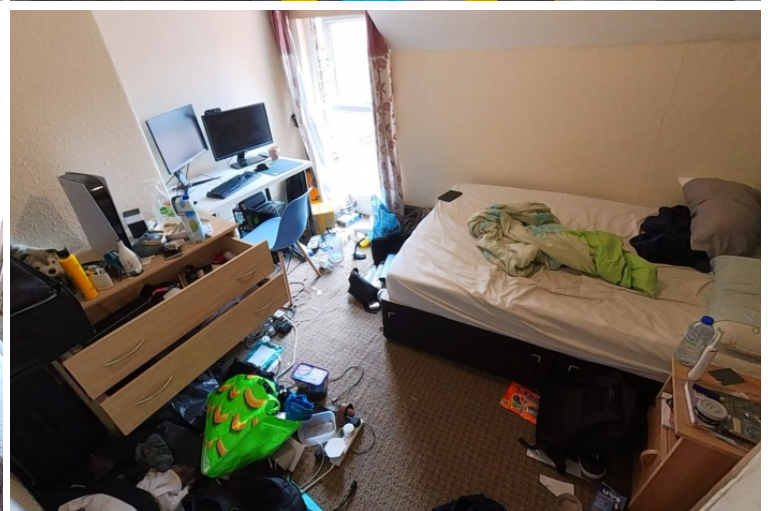
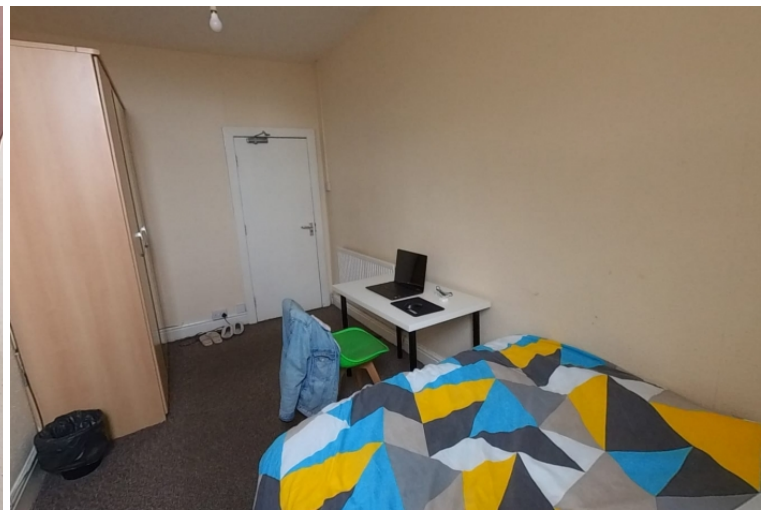
Places nearby:

* Sainsbury's supermarket

* Gyms and Parks

* Restaurants and Takeaways

* Pubs & Cafe



Telephone: 0161 248 4585

Email: info@buraqestates.co.uk



www.buraqestates.co.uk