



£1,295 PCM

Chervil Close, Manchester M14 7DP

Semi-Detached House | 4 Bedrooms | 2 Bathrooms



Step Inside

Key Features

- 4 Bedrooms
- 2 Bathrooms
- Large open plan living and dining room
- Driveway and Garage
- Back Garden
- Available Now
- Perfect for working family

Main Particulars

AVAILABLE NOW

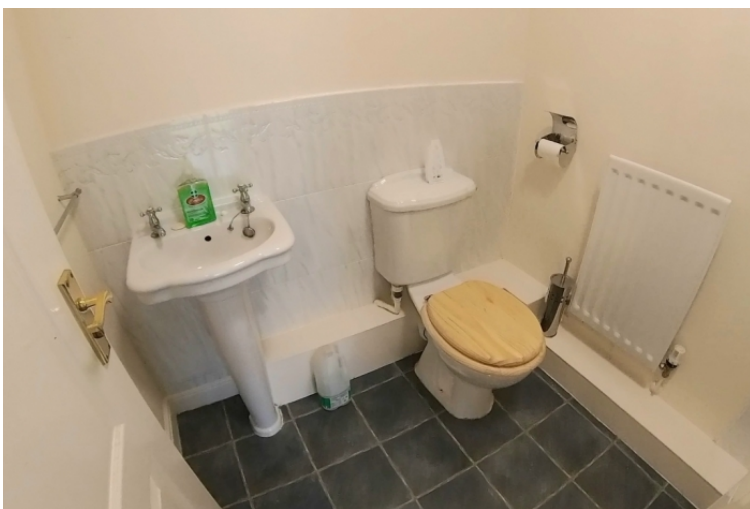
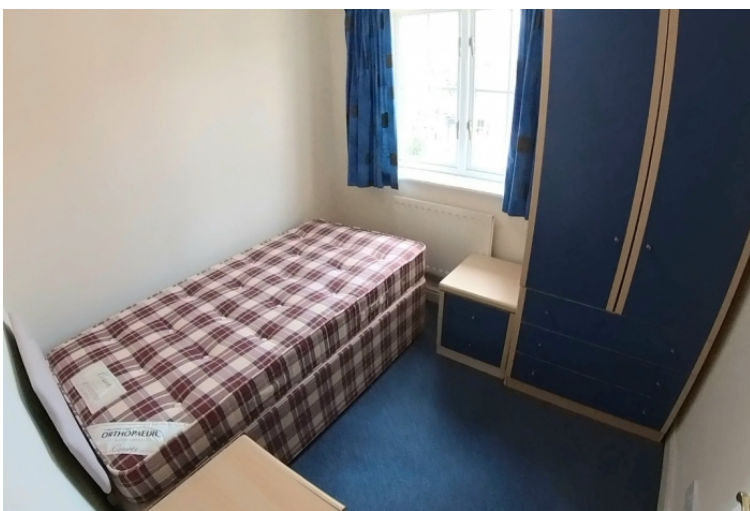
A well-presented townhouse conveniently situated for ease of access to Fallowfield and motorway links. In brief, the accommodation comprises an entrance hall leading to a ground floor Bathroom, Downstairs Bedroom, and a utility room with a large Garage and a private garden.

The First floor has a large open-plan dining area and Living room leading to a fully fitted Kitchen.

The second floor has three double bedrooms and a bathroom.

Available now

Only for Family



Telephone: 0161 248 4585

Email: info@buraqestates.co.uk



www.buraqestates.co.uk