



£110 Per Person Per Week

Slade lane, Mancheser M19 2BA

Semi-Detached House | 8 Bedrooms | 4 Bathrooms



Step Inside

Key Features

- 8 Bedrooms
- 4 Bathrooms
- 2 Ensuites
- Quality fittings & furnishing throughout
- Double glazing & central heating
- Easy access to city centre
- Bills included
- Half rent July only
- Available from 1st July 2021
- Property Reference: 92635

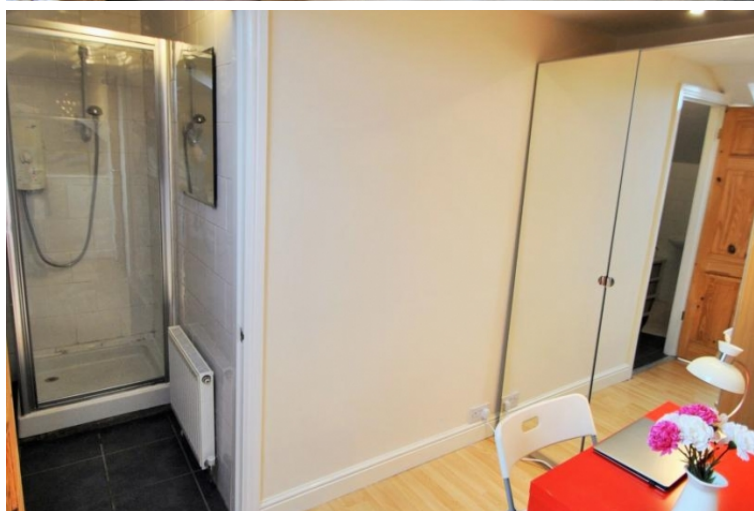
Property Description

Modern 8 bedroom house, available for NEXT ACADEMIC YEAR, 1st July 2022, Slade lane, Victoria Park, Manchester, M19 2BA. This eight-bedroom house is Well Maintained and features modern décor with spacious rooms and a lounge area. It has been specially developed with attention to the specific needs of students.

Main Particulars

- **All 8 double sized bedrooms (2 ensembles) have double beds** with semi orthopedic mattresses
- **Includes High-speed fiber broadband always connected – no set up needed**
- Lounge with leather sofas & TV with Freeview & dining table for eight with benches
- The kitchen has a Dishwasher, a Washer Dryer, 2 Fridge Freezers, 2 ovens with 8 Gas Hobs so plenty of cooking space, lots of cupboard space.
- **4 bathrooms** with showers, one with a bath
- Practical features include double glazing, efficient gas-fired condenser boiler, interlinked smoke alarms in every room & intruder alarm
- Exterior: Parking to the front & grassed back garden with gardener service included
- Bus: 500m on Birchfields Road (no. 50 every 5mins at peak times & until midnight) or 400m to Stockport Rd (197 services straight to Uni & night bus 192 service)
- The nearest railway station is Levenshulme, 8 min walk, 7 minute journey time to Manchester city center.
- Newsagent/corner shop / off license. Chinese takeaway, 200m,
- Retail park with Burger King, Pizza Hut, Iceland, and Instore 800m
- Asda 500m walk, Lidl 900m, a retail park with Burger King, Pizza Hut, Iceland, and Poundstretcher 400m
- **Rent is £110 pppw, all bills included**

Property reference number: 92635



Telephone: 0161 248 4585

Email: info@buraqestates.co.uk



www.buraqestates.co.uk