



£424,350

Riva – Duplex

Duplex | 3 Bedrooms | 3 Bathrooms



Step Inside

Key Features

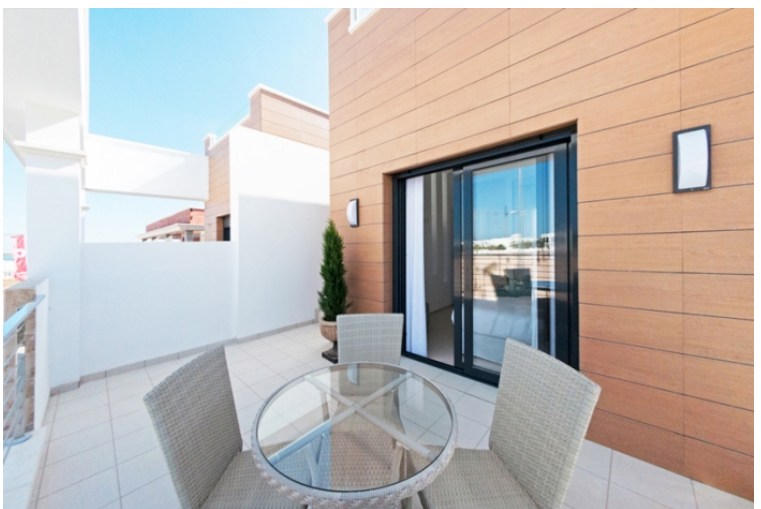
- Private parking
- Swimming Pool

Property Description

Riva is a Residential composed by two models of properties semi detached. We can find Samara model with 3 bedrooms and Ivory model with 5 bedrooms, both of them with basement included. All the properties in this Residential are corners which makes that all of them contain a large garden area. All of them are overlooking to the common swimming pool and also, they count with a private parking space inside their plot. The location of the Residential Riva is unbeatable, it has incredible views to the Salt Lakes. Is close to all type of services like commercial areas, hospitals, airports, leisure areas and more. UNIQUE CODE: EM

Main Particulars

Riva is a Residential composed by two models of properties semi detached. We can find Samara model with 3 bedrooms and Ivory model with 5 bedrooms, both of them with basement included. All the properties in this Residential are corners which makes that all of them contain a large garden area. All of them are overlooking to the common swimming pool and also, they count with a private parking space inside their plot. The location of the Residential Riva is unbeatable, it has incredible views to the Salt Lakes. Is close to all type of services like commercial areas, hospitals, airports, leisure areas and more. UNIQUE CODE: EM



Telephone: 0161 248 4585

Email: info@buraqestates.co.uk



www.buraqestates.co.uk