



£110 Per Person Per Week

School Grove, 6 Bed, Manchester M20 4RT

Semi-Detached House | 6 Bedrooms | 2 Bathrooms



Step Inside

Key Features

- 6 Bedroom
- 2 bathrooms
- Double glazing & Gas central heating
- Easy access to City Centre
- Ideal for students
- Close to Public Transport
- Bills Included
- Available from 1st July 2021
- Property Reference:

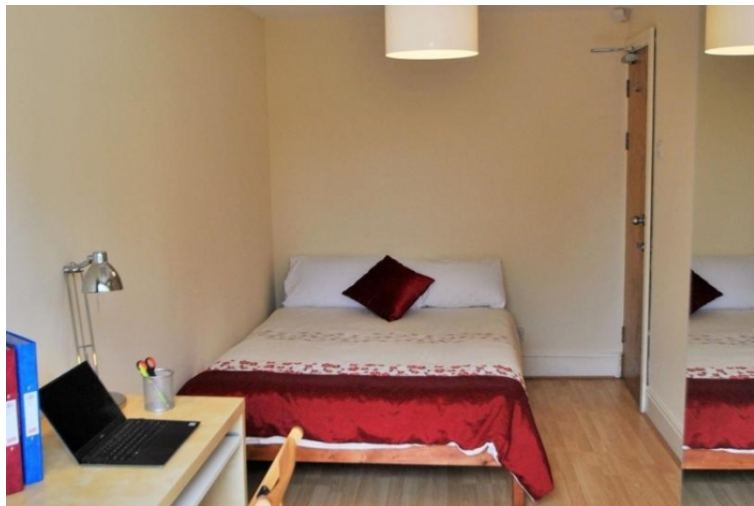
Property Description

The modern six-bedroom house, available for NEXT ACADEMIC YEAR, 1st July 2022, School Grove, Fallowfield, Manchester, M20 4RT. This six-bedroom house is Well Maintained and features modern décor with spacious rooms and a lounge area. It has been specially developed with attention to the specific needs of students.

Main Particulars

- **All 6 double sized bedrooms have double beds** with semi orthopedic mattresses
- **200mb Broadband always connected – no set up needed**
- Leather sofas & includes 50" Smart TV with Freeview
- Fitted Kitchen with Dishwasher, Washer Dryer, 2 Fridge Freezers, 2 ovens with 5 Gas Hobs so plenty of cooking space, lots of cupboard space & dining table with benches
- **2 Bathrooms** with showers 1 comes with bath as well
- Practical features include double glazing, efficient gas-fired condenser boiler, interlinked smoke alarms in every room & security alarm
- Exterior: Parking to the front & gated grassed back garden with gardener service included
- Bus: 300m to Kingsway(no. 50 every 5mins at peak times & until midnight), 50m Parrs Wood Road(no. 44 & 145 every 20mins 7.30am to 10am) or 500m to Wilmslow Road(night bus 143)
- Train: Mauldeth Road station 800m – 10 mins to City
- Aldi Newsagent/corner shop/off license 200m, Sainsbury's Fallowfield 750m
- Parade of shops inc Co-op supermarket, post office, bakery, etc 500m
- **Rent is £110 pppw, all bills included**

Property reference number: 92498



Telephone: 0161 248 4585

Email: info@buraqestates.co.uk



www.buraqestates.co.uk